



# The Impacts and Use of The Principle of Good Governance in Food Safety Control Actions

---

Outi Lepistö

Department of Food and Environmental  
Hygiene

University of Helsinki



# The themes of this lecture

---

- i Background
- i The aims of the study
- i Materials
- i Methods
- i Results
- i Discussion



## Background to the study

---

- i The researcher have been working at environmental health sector in municipal level for years
- i Many discussions with colleagues
- i Many problems, inaccuracy and misconceptions about usage of compulsory actions
- i The need for extra training and instructions especially about the juridical points



## The type of the study

---

- i The nature of this study is qualitative and multidisciplinary;
- i The problems are viewed through veterinary medicine, sociological jurisprudence and sociology
- i The main type of the study is social science
- i Academic thesis was published in May 2008 in Department of Food and Environmental Hygiene



## The aim of the study

---

- i The major aim of this study was to determine whether the principle of good governance impacts the food safety;
- i effectiveness of control actions;
- i or decreases the health hazards related to environmental health or food safety



## The aim of the study II

---

- i To define the center concepts in environmental health
- i To define the major principles in legislation concerning food stuffs and environmental health in Finland
- i To define the practical and legal usage of compulsory actions in Finland over the past ten years
- i To define the most common problems at municipal level
- i *Compulsory actions* in this study means requests, orders, prohibitions, cancelling of approvals and placing the aleatory fines



# Materials

---

- i 202 documents collected from veterinarians working at municipal level
- i The legal proceedings for last ten years in Finnish court instances concerning the compulsory actions
- i A survey for veterinarians working as authorities at the municipal level about their doctrines, attitudes and opinions about good governance and compulsory actions



# Methods

---

- i The analysis of the contents of documents from municipal authorities
- i The analysis of the contents of the legal documents from courts
- i The qualitative analysis of the collected documents
- i A modified, qualitative grounded theory-based method for analysis of the answers
- i The statistical analysis of the factors found from the documents



## Results

---

- i The good governance impacts the elimination of health hazards, the impressiveness of compulsory actions and the efficiency of control



## Results: The most significant factors of good governance

---

- i The hearing process (the documentation and implementation)
- i The argumentation of the decision (both the fact argumentations and legal argumentations)
- i The documentation of health hazards
- i The direct enforcement of the decision



## Results: The most common causes of repealing of the decisions at courts

---

- i The incomplete or incorrect hearing process (50 % of the decisions)
- i The incomplete argumentations and documentation of health hazard (22 % of the decisions)
- i Notice: the directions of the appeals were lacking in one-third of the decisions



## Results: The direct enforcement of the decisions

---

- i Can be used in every decision concerning compulsory actions
- i Shortens significantly the time of the process if the decision is being pleaded to the court
- i The use of the direct enforcement raised from 5 % to 42 % in material collected



## Results: The survey

---

- i The veterinarians were divided into three categories according to their doctrines and attitudes (negative, neutral and positive)
- i The veterinarians' doctrines and attitudes impact the use of compulsory actions and the notifying of the contraventions to the police
- i The lack of information and uncertainty among the veterinarians as authorities at the municipal level prevented the use of the compulsory actions when needed



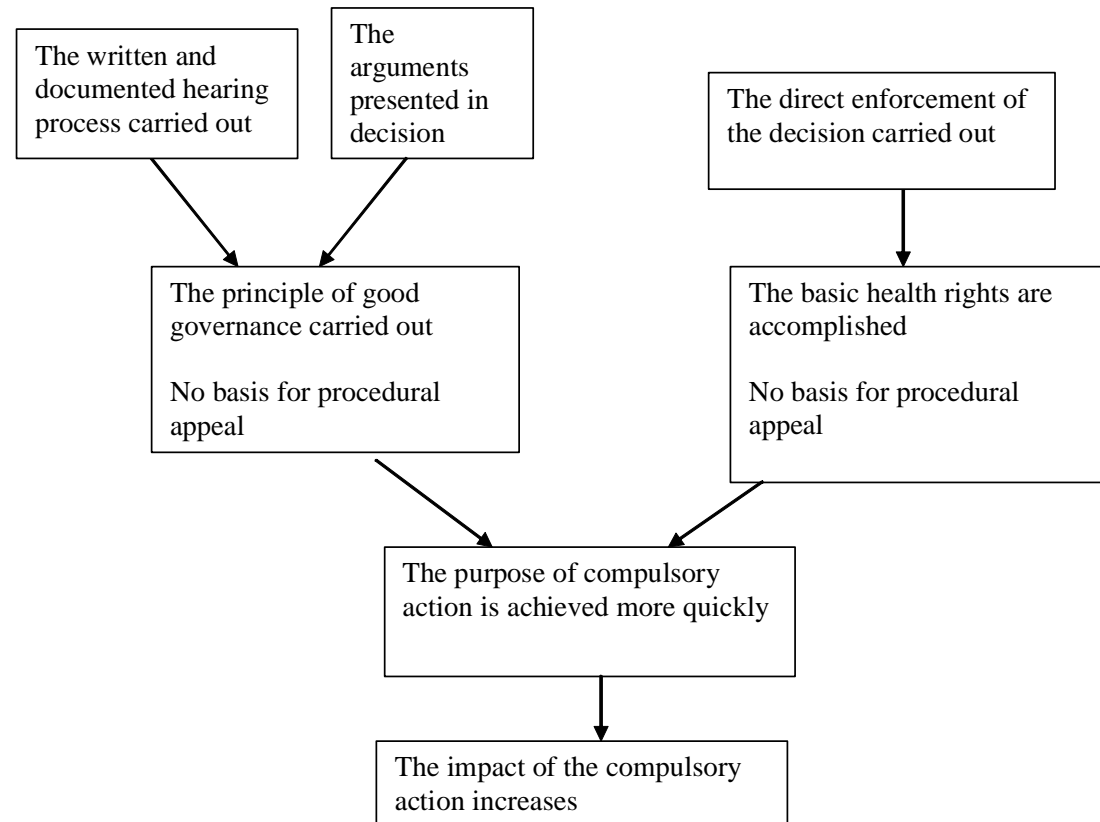
## Results: The models

---

- i Demonstration of four models which describe the impact of the different factors on the good governance and the compulsory actions

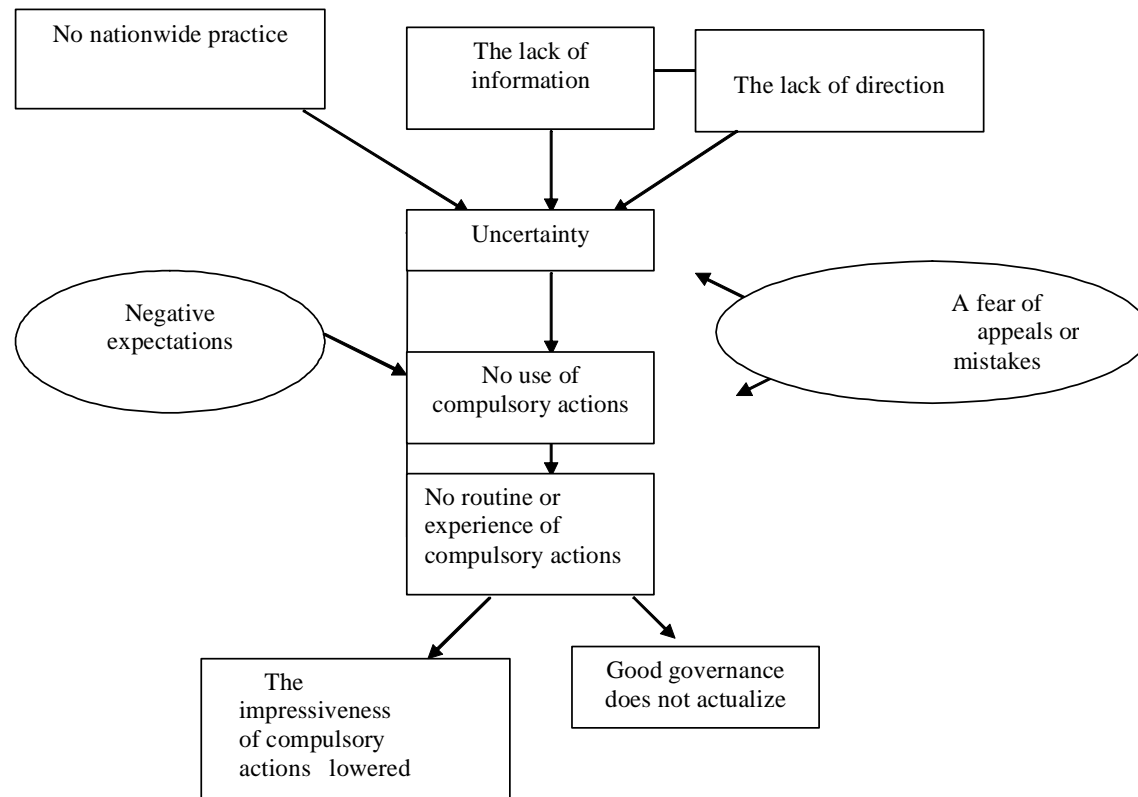
## The use of the principle of good governance impacts the food safety and the effectiveness of control actions

---



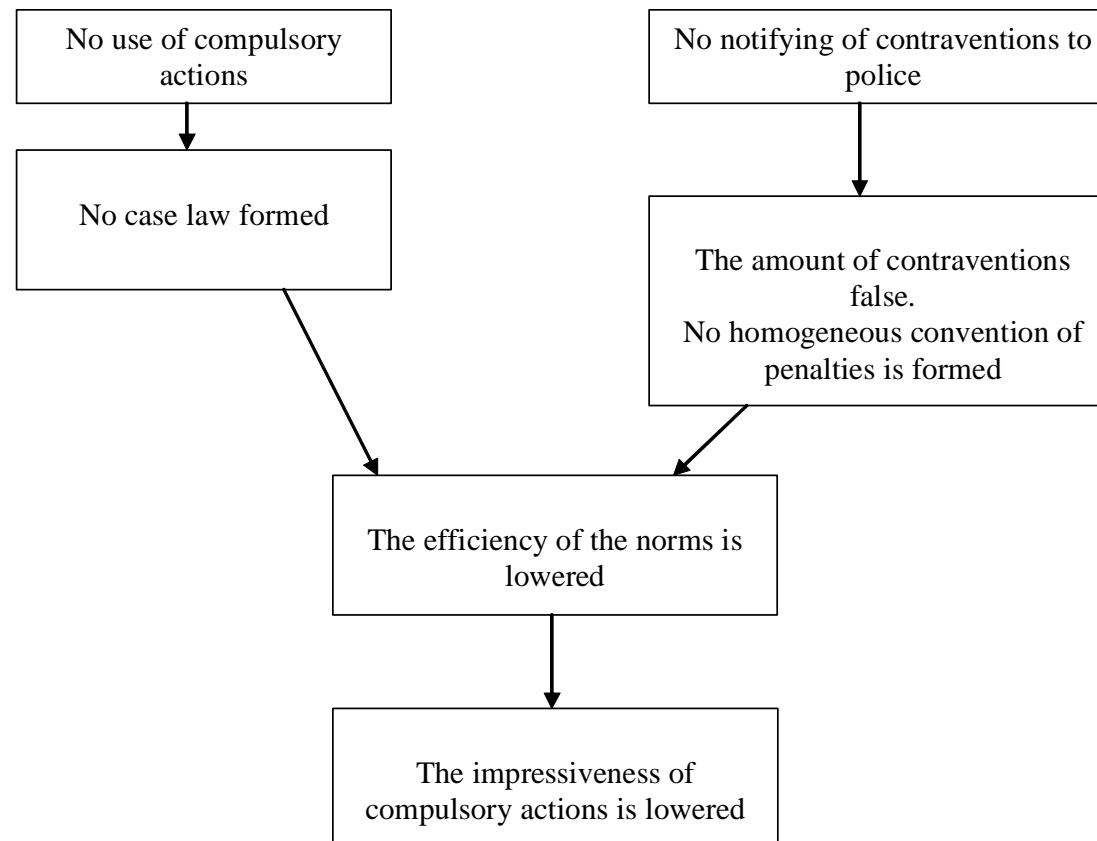
# The impact of doctrines, attitudes and direction

---



# The efficiency of the norms

---





## Results: The central administration

---

- i The central administration has a major role for the application of equal rights and demands in compulsory actions at the local (municipal) level
- i The central administration can influence both the good governance practice and the use of the compulsory actions
- i By nationwide, standardised directives and regulations



## Discussion

---

- i There is a need for more specialised education, directives and regulations concerning the compulsory actions with environmental health in Finland
- i In order to switch the emphasis of control to more preventive means requires actions to encrease the effectiveness of the norms and regulations